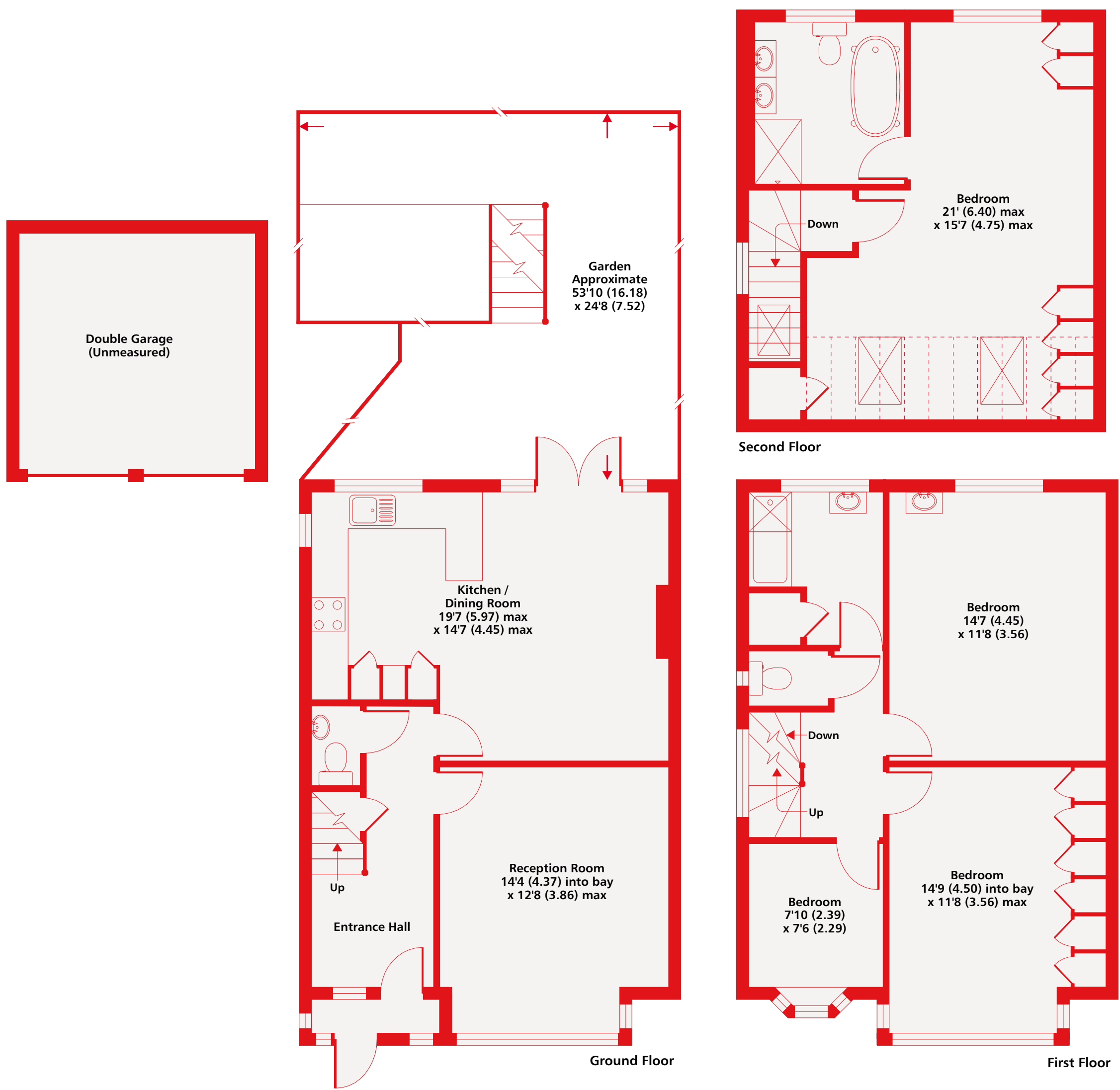


Denotes restricted head height



Westwood Park SE23
Approximate Area = 1522 sq ft / 141.3 sq m (excludes garage)
Including Limited Use Area(s) = 81 sq ft / 7.5 sq m
For identification only - Not to scale

Kinleigh Folkard & Hayward



Floor plan produced in accordance with RICS Property Measurement Standards incorporating International Property Measurement Standards (IPMS2 Residential). © nichecom 2020. Produced for Kinleigh Folkard & Hayward. REF: 639293